

Manufacturing	Pharmaceutical	Healthcare	Portfolio	Logistics	Financial	Government	Business
Case Study	Project Review	White Paper	Value Proposition				

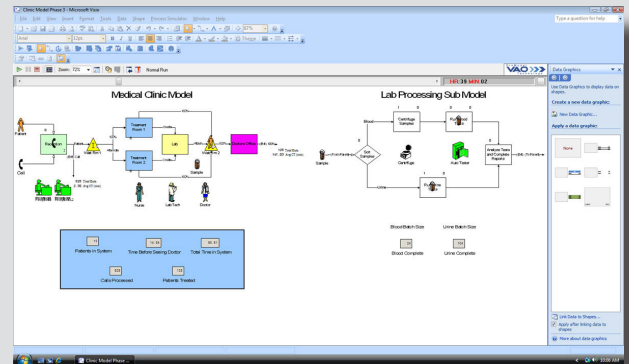
Benefits of Properly Redesigned Clinical Workflow

Accurately predict the effect of major IS System Initiatives—Before committing resources:

**CPOE
PACS
Business Process Automation**

**EMR/EHR Implementation
RFID/RTLs
Automated Medication Dispensing Systems**

- Eliminate wasted staff effort by testing ideas of workflow redesign before implementing
- Functionality—Quickly identify bottlenecks. Does the proposed process work as intended?
- Performance—Will this process hold up over time, for higher volumes, and improve efficiency over the older process?
- Systemic effects—Will the new process adversely affect other processes or systems in place?



Timetable:

The ProModel clinical workflow evaluation project takes approximately (5) days to complete. The timeline for the project is as follows:

Prior to arrival on-site we will work via teleconference with your assigned point person to gain necessary knowledge of the clinical workflow to be studied. The boundaries and scope of the process will be agreed upon, stakeholders from all relevant functional areas will be determined.

Monday afternoon - A tour of the facility to walk the process (if applicable), and any last minute preparations that must be addressed to support the workshop.

Tuesday - Gain a deeper understanding of the “As-Is” process.

- Our consultants will facilitate the creation of a traditional process map of the clinical workflow to be evaluated.
- Work together to create a simulation model of the clinical workflow process being evaluated. Verify assumptions about the observed behavior of the system.
- Provide a baseline against which the potential beneficial impact of the new technology can be tested.

Wednesday - Focus on defining the ideal “To-Be” process flow.

- This part of the event is critical for setting realistic expectations about how the “Ideal Work Flow” will likely behave under real-world constraints such as process variability, resource contention and interdependencies.
- Test redesigned work flows independent of the technology being implemented.
- Explore alternatives for reaching short-term process improvement goals and alleviate bottlenecks.

Thursday - Facilitate a design of experiments to test the impact of proposed technology on the system.

- A Clear path forward will be established.
- A schedule to Check and Adjust the plan will be determined.
- Materials for presenting our findings to management will be agreed upon and finalized.

Friday - Co-present findings from the workshop to senior leadership.

- Reports and animation from the simulation will be a key part of this presentation.

